

**SPECIAL SIZED BURIAL CONTAINERS**

- INFANT GRAVE LINER.....\$850.00  
Dimensions: Inside 16" x 32"
- JUNIOR GRAVE LINER.....\$950.00  
Dimensions: Inside 22" x 56"
- OVERSIZED GRAVE LINER BOX.....\$1500.00  
Dimensions: Inside 35" x 94" x 28" / Outside 39" x 95" x 42"
- DOUBLE OVERSIZE GRAVE LINER....\$2000.00  
Dimensions: Inside 40" x 91" x 33" / Outside 45" x 96" x 36"
- OVERSIZED MONTICELLO (Lined).....\$1700.00  
Dimensions: Inside 34" x 90" x 28" / Outside 39" x 95" x 42"

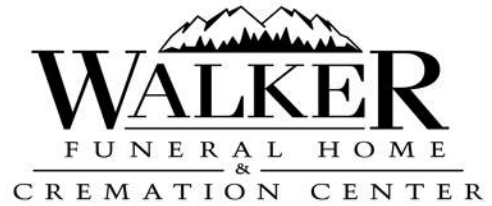
**Cremation Urn Burial Containers**

- Phoenix Urn Vault.....\$550.00
- Patrician Urn Vault.....\$650.00
- Stainless Urn Vault.....\$750.00
- Copper Urn Vault.....\$850.00
- Bronze Urn Vault.....\$950.00



**Additional Options**

- Disinterment Charges.....\$1195.00  
*(within 50 Miles)*
- Vault/Casket Disposal.....\$250.00
- Additional Tent*(with vault purchase)*.....\$100.00
- Tent *(without vault purchase)*.....\$300.00
- Vault Holiday/Sunday Fee.....\$450.00  
(Subject to change and per vault company)
- Additional mileage (Vault Company).....  
Call for price



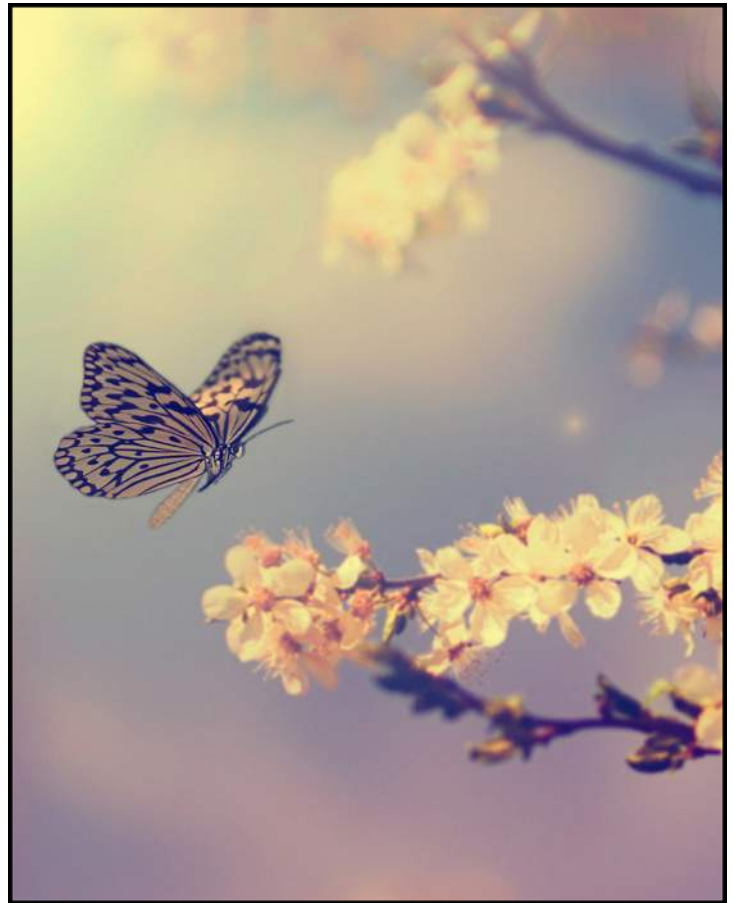
187 South Main  
Spanish Fork, Utah 84660  
801-798-2169  
walkermortuary@gmail.com

587 South 100 West  
Payson, Utah 84651  
801-465-3846  
walkermortuary2@gmail.com

**OUTER BURIAL CONTAINER  
PRICE LIST**

These prices are effective as of October 1, 2021 but are subject to change without notice.

In most areas of the country, state or local law does not require that you buy a container to surround the casket in the grave. However, many cemeteries require that you have such a container so that the grave will not sink in. Either a grave liner or a burial vault will satisfy these requirements.



**DISCLAIMER OF WARRANTIES**

THE FUNERAL HOME MAKES NO REPRESENTATIONS OR WARRANTIES REGARDING THE OUTER BURIAL CONTAINERS. THE ONLY WARRANTIES, EXPRESSED OR IMPLIED, GRANTED IN CONNECTION WITH THE OUTER BURIAL CONTAINERS ARE THE EXPRESS WRITTEN WARRANTIES, IF ANY EXTENDED BY THE MANUFACTURERS THEREOF. THE FUNERAL HOME HEREBY EXPRESSLY DISCLAIMS ALL WARRANTIES, EXPRESSED OR IMPLIED, RELATING TO THE OUTER BURIAL CONTAINERS, INCLUDING, BUT NOT LIMITED TO, THE IMPLIED WARRANTIES OF MERCHANTABILITY AND FITNESS FOR A PARTICULAR PURPOSE.

# DOUBLE REINFORCED

## BRONZE

(Premium Strength).....\$3,250.00

Dimensions: Inside 86"L x 31"W x 21"H (w/o lid) / Outside 91.5"L x 35.25"W x 34.5"H

Reinforced concrete with ABS Fiberlon Liner with the Integra Bond bonding system, and Interior Bronze Metal Liner for extra strength. Bronze carapace with name plate. Doric Integra-Seal of butyl compound in the seal groove. Backed by the Doric full 100 year warranty.



# SINGLE REINFORCED

## PATRICIAN

(Standard Strength).....\$1,650.00

Dimensions: Inside 86"L x 31"W x 21"H (w/o lid) / Outside 91.5"L x 35.25"W x 34.5"H

Reinforced concrete with ABS Luster-Tech ribbed plastic liner with the Integra Bond bonding system. Matching cover carapace with name plate. Doric Integra-Seal of butyl compound in the seal groove. Backed by the Doric full 75 year warranty. Approx. 2700 lbs.



## PHOENIX

(Standard Strength).....\$1,500.00

Dimensions: Inside 86"L x 31"W x 21"H (w/o lid) / Outside 91"L x 35"W x 34"H

Reinforced concrete with a Fiberlon Polystyrene Ribbed Plastic Liner. Doric Integra-Seal of butyl compound in the seal groove. Backed by the Doric full 75 year warranty. Approx. 2500 lbs.



## LYDIAN COPPER

(Premium Strength).....\$2,995.00

Dimensions: Inside 86"L x 31"W x 21"H (w/o lid) / Outside 91.5"L x 35.25"W x 34.5"H

Reinforced concrete with ABS Fiberlon Liner with the Integra Bond bonding system, and Interior Copper Metal Liner for extra strength. Copper carapace with name plate. Doric Integra-Seal of butyl compound in the seal groove. Backed by the Doric full 100 year warranty.



## ATHENIAN STAINLESS

(Premium Strength).....\$2,450.00

Dimensions: Inside 86"L x 31"W x 21"H (w/o lid) / Outside 91.5"L x 35.25"W x 34.5"H

Reinforced concrete with ABS Fiberlon Liner with the Integra Bond bonding system, and Interior Stainless Steel Metal Liner for extra strength. Stainless Steel carapace with name plate. Doric Integra-Seal of butyl compound in the seal groove. Backed by the Doric full 100 year warranty.



## TIARA

(Economy Strength).....\$1,400.00

Dimensions: Inside 86"L x 31"W x 21"H (w/o lid) / Outside 90.5"L x 35"W x 34"H

Reinforced concrete with a Durapreme Polystyrene Ribbed Plastic Liner. Doric Integra-Seal of butyl compound in the seal groove. Backed by the Doric full 50 year warranty. Approx. 2500 lbs.



## TITAN

(Economy Strength).....\$1,350.00

Dimensions: Inside 86"L x 31"W x 21"H (w/o lid) / Outside 90.5"L x 35"W x 34"H

Reinforced concrete with a Durapreme Polystyrene Ribbed Plastic Liner. Doric Integra-Seal of butyl compound in the seal groove. Backed by the Doric full 50 year warranty. Approx. 2500 lbs.



## NON SEALED - GRAVE-LINER BOX

(Minimal Strength).....\$1,150.00

Dimensions: Inside 87"L x 30.5"W x 20"H (w/o lid) / Outside 90.5"L x 34.25"W x 30"H

Basic Concrete Box

